

# Resizing & Save As

# Resizing & Save As

We will look at Resizing & Save As options in Picasa, Photoshop Elements, Photoshop, Affinity and Lightroom.

Within your Image Editor where possible you should be working on a Raw file from your camera at 300ppi.

Why 300 ppi I hear you say, this is so you get the best quality from your image for printing.

# Resizing & Save As

If you don't work with a Raw file and work in jpeg, you should make a copy of your jpeg and work on that rather than the original file.

Now that you have worked on your wonderful image, it is time to save your image either for club submission and or print.

First thing to do is save your image as PSD or as the native file of your editor.

In Lightroom there is no need to save your image. Lightroom keeps a little sidecar file with the adjustments you have made and applies these, when you export your image.

Why should I do this I hear you say, saving as a PSD will save all your layers/workings, so at a later date when your processing skills have evolved you can revisit your image.

If you save as a jpeg you will lose all the layers, and further more every time you save a jpeg file you lose quality.

# Picasa



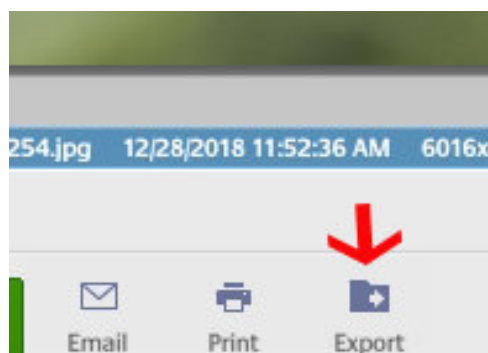
First we will look at Picasa, unfortunately Picasa is very limited to say the least.

At this present time Google is retiring Picasa with no further development and focusing on Google Photos a cloud based app.

I would strongly recommend looking at Affinity Photo from Serif.

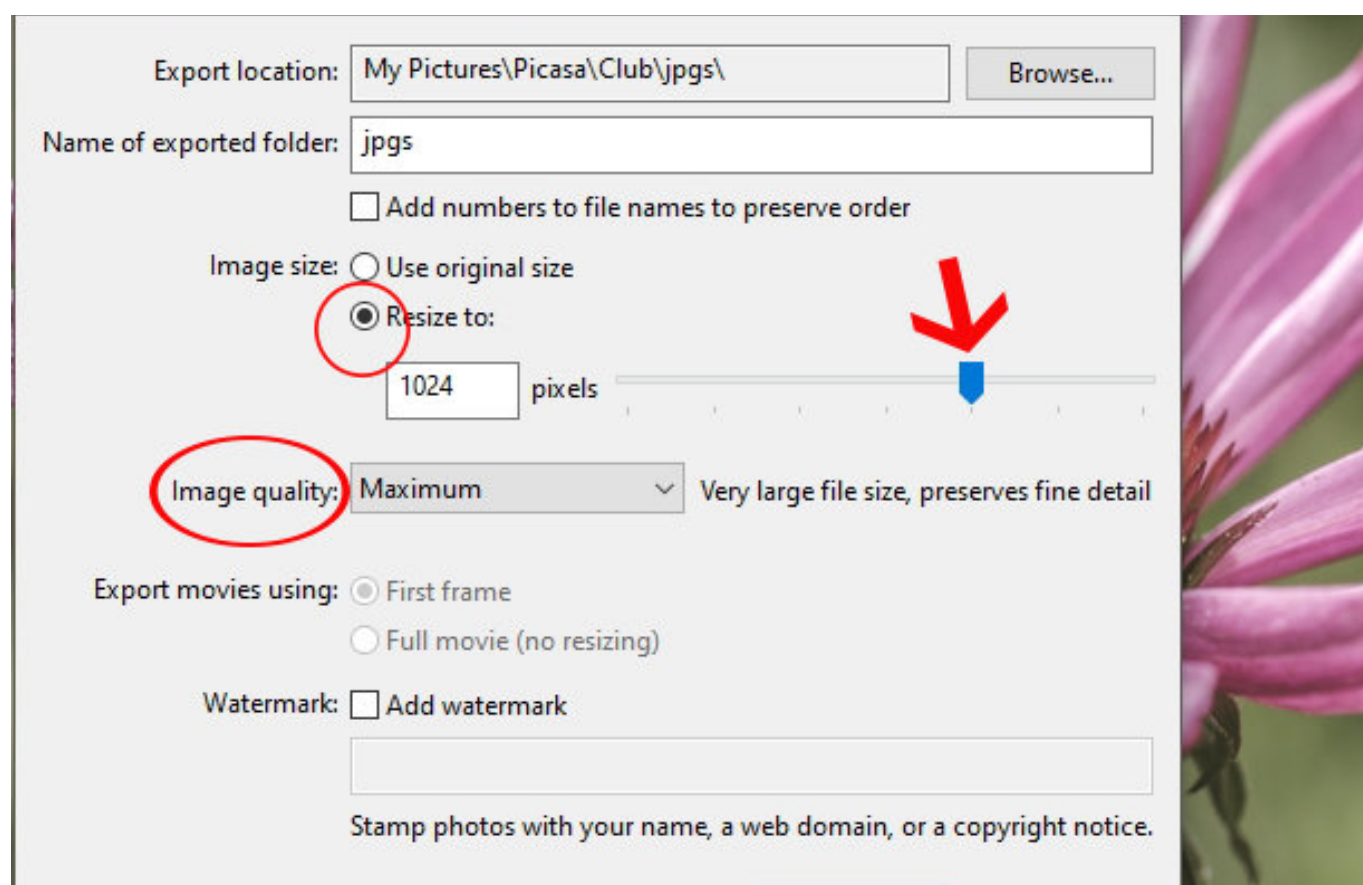
A very strong contender for the Adobe Photoshop, crown, every bit as good and some ways better.

In Picasa, to save an image you click on the Export button at the bottom of the window.



In Picasa to save your image for club digital submission click on the export button. In the Export dialogue box check the Resize to button and move the slider until you have 1024 showing in the pixel box. Select Maximum in the Image Quality box.

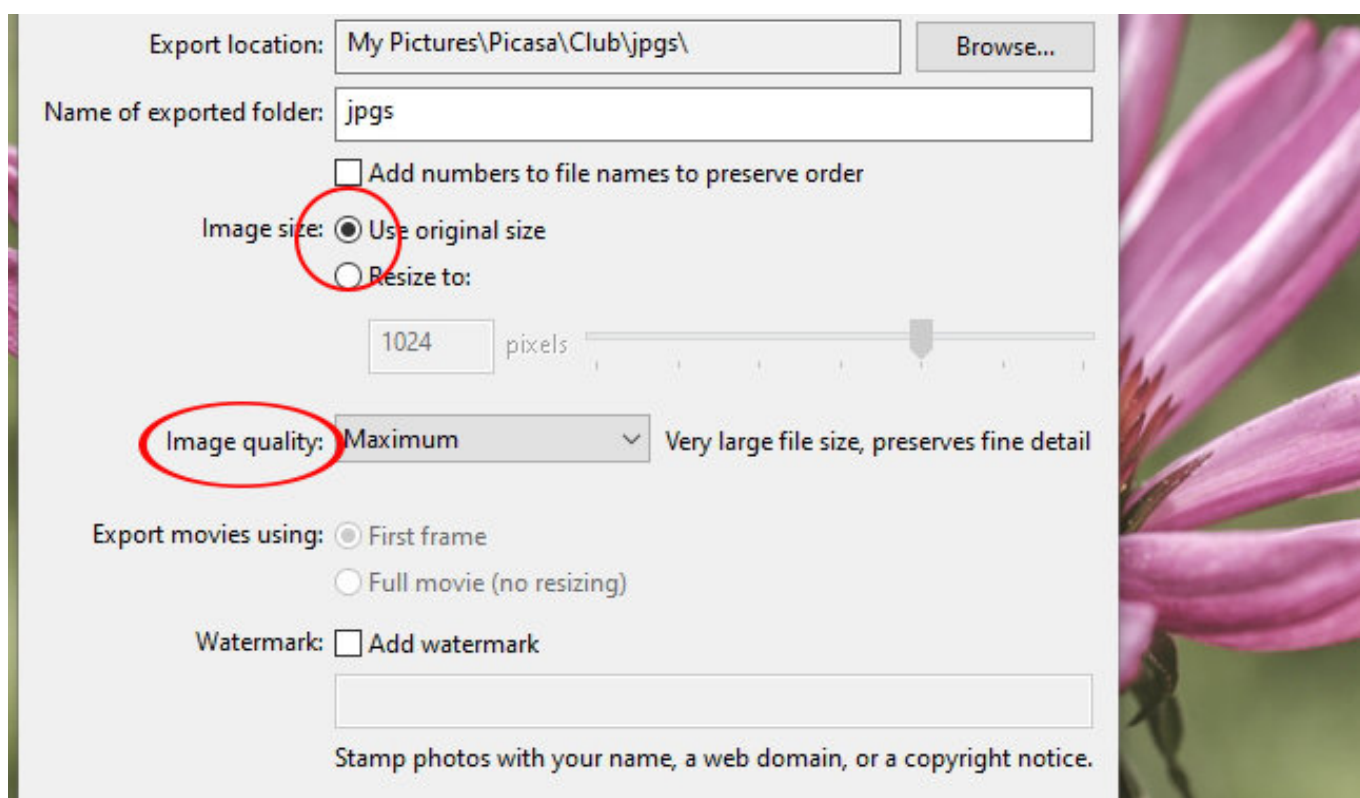
Click the Export button.



To save for print in Picasa, in the Export box select Use original size and select Maximum from the Image quality drop down menu.

I couldn't find any option to resize the image to the print size.

When finished click on the Export button.



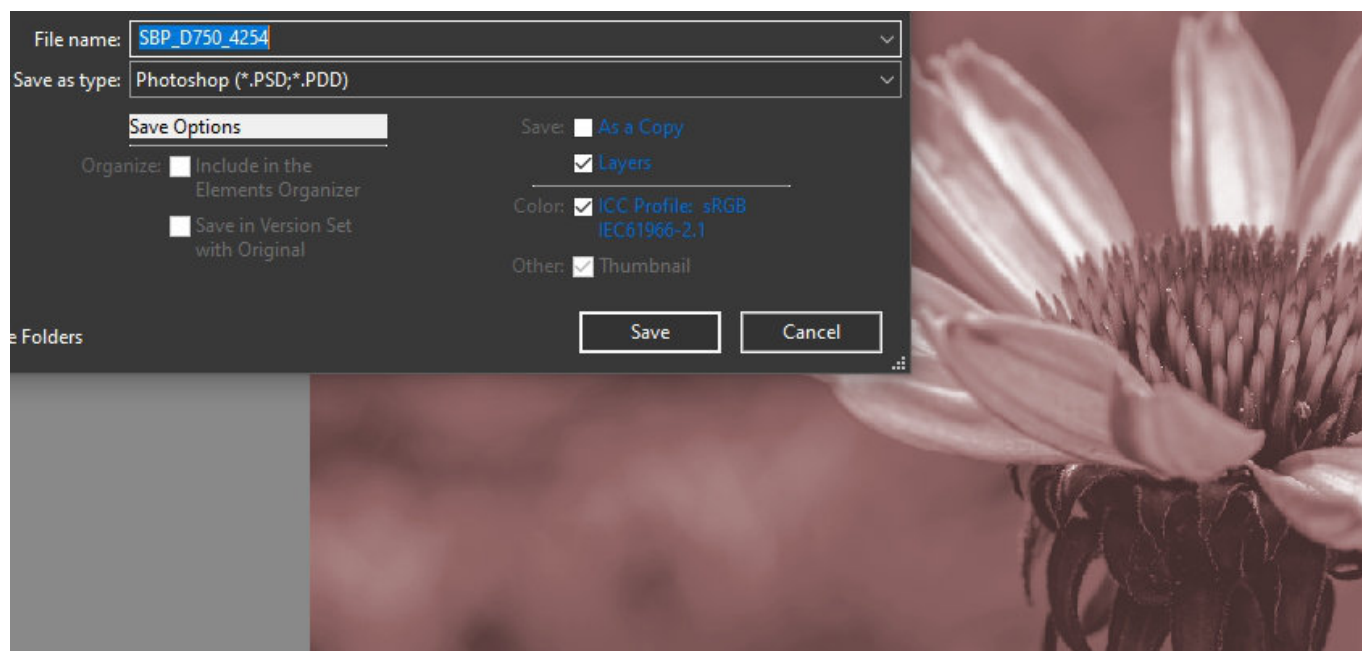
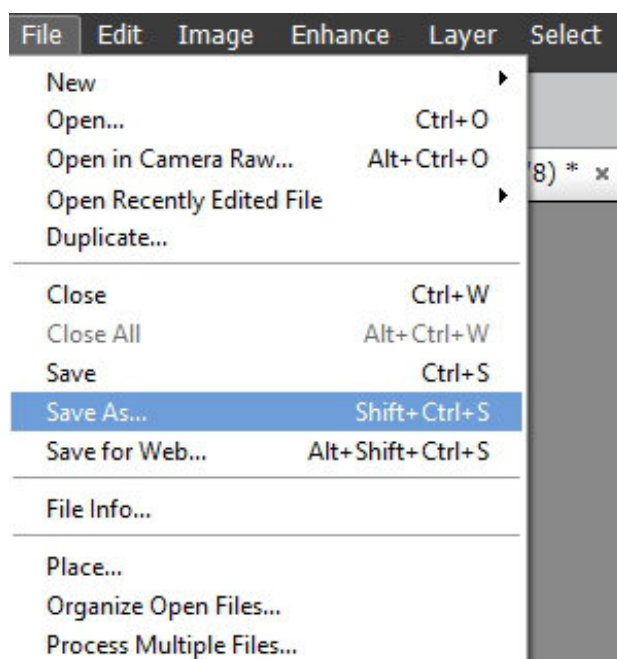
# Photoshop Elements



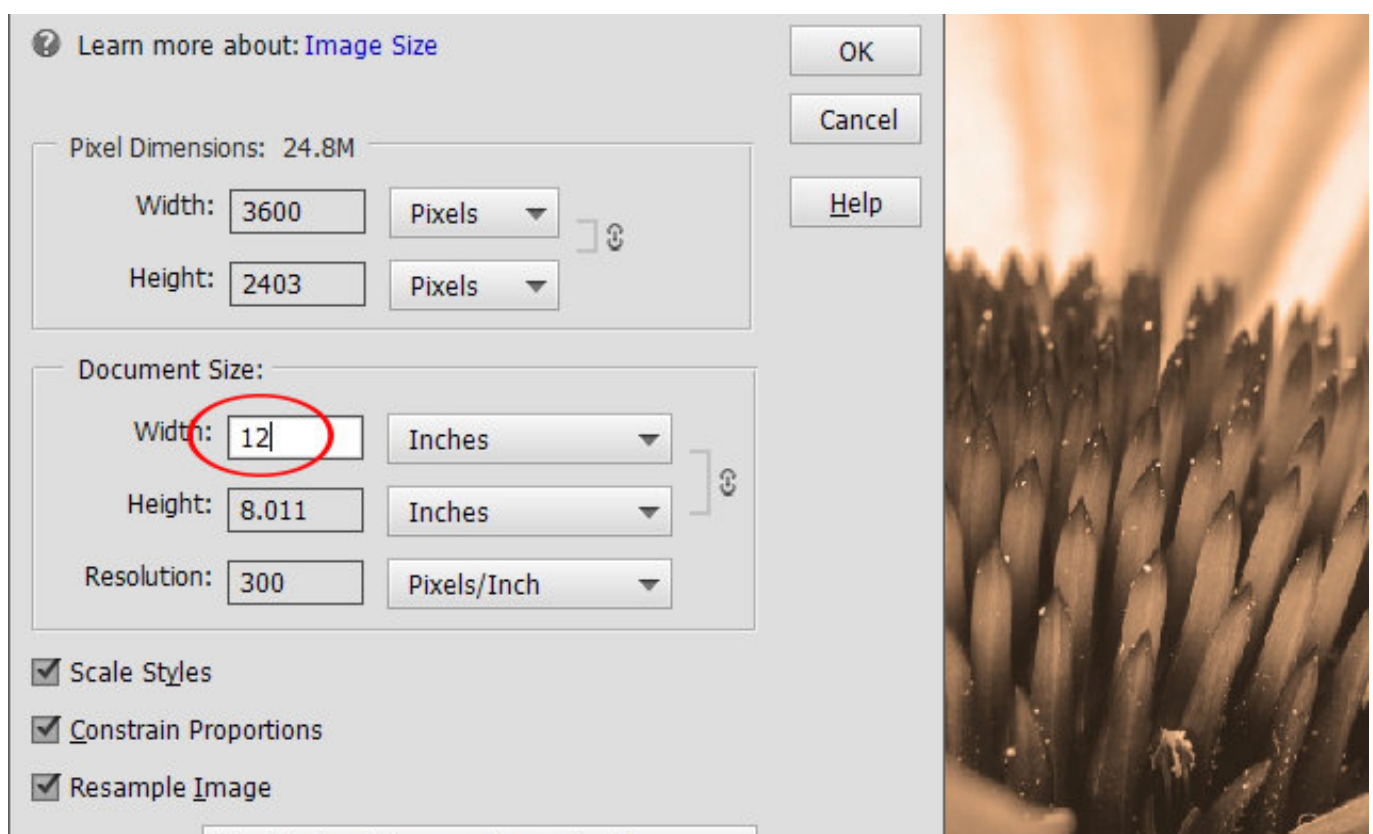


## Photoshop Elements.

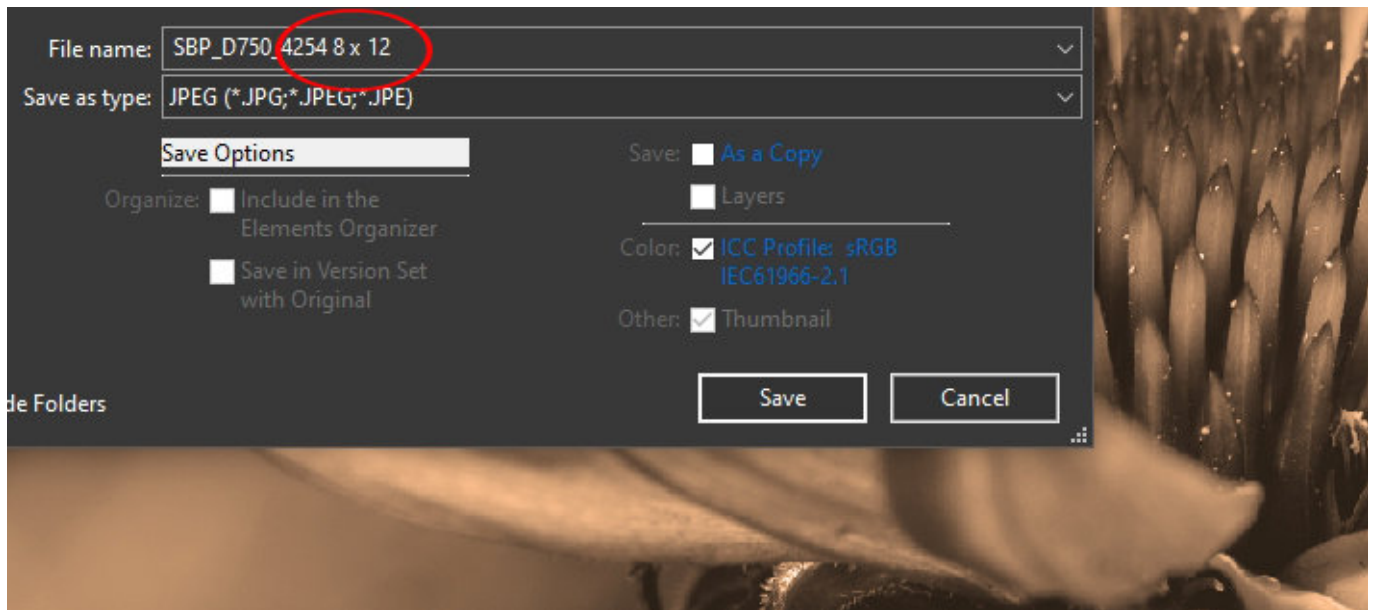
To save your working file as a PSD goto File - Save As in the Save As dialogue box select Photoshop (\*.PSD;\*.PDD) from the drop down Save as type menu. Click Save. Now you have saved your file as PSD which you can go back to and rework.



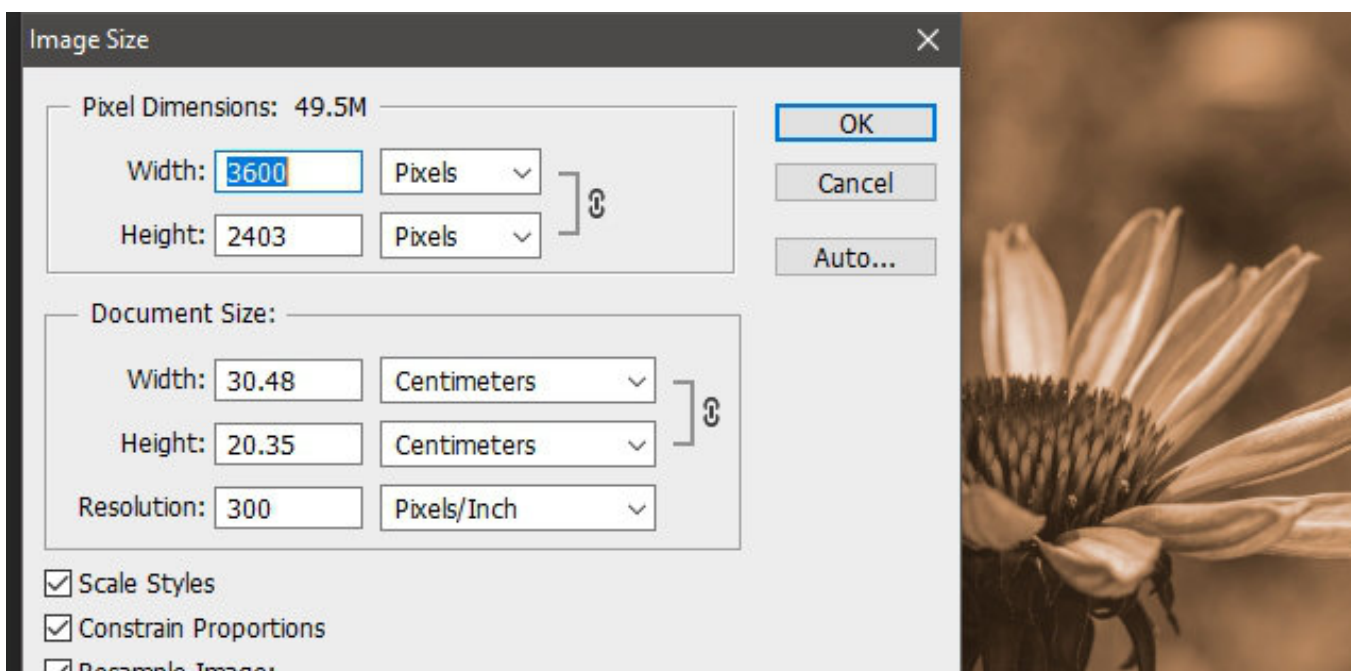
In Elements to save your file as a file for print, goto Image - Resize - Image Size. In the image resize dialogue box, in the Document Size Box select inches from the drop down menu, Change the width dimension to 12 if making 8 x 12 print leave the Constrain Proportions checked and click OK.



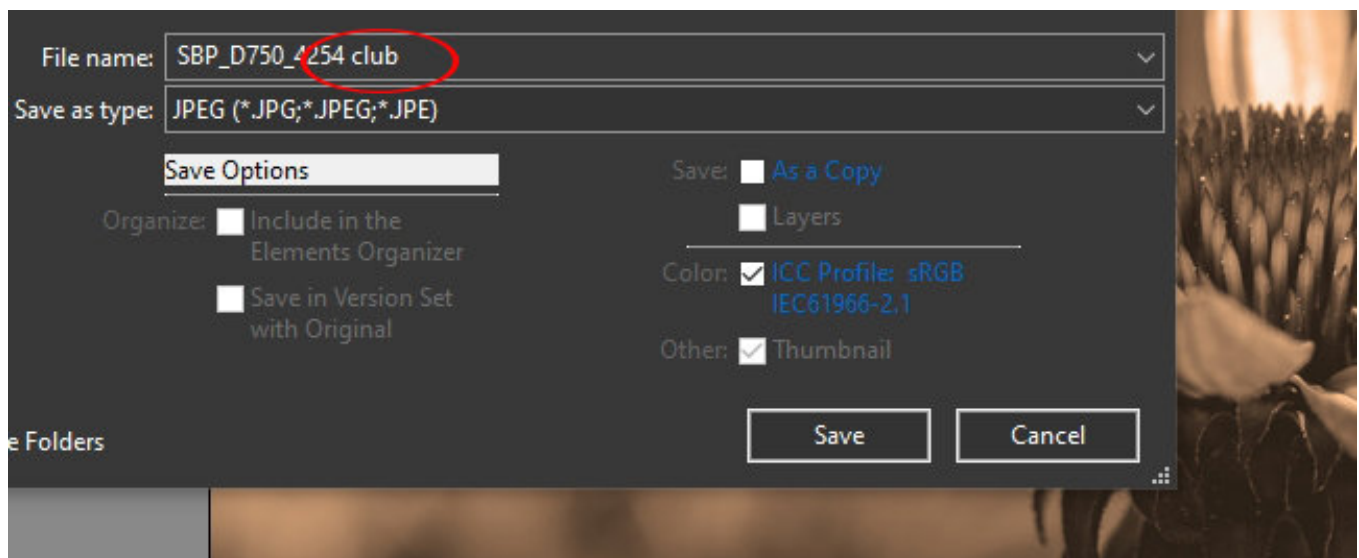
Now Save your file as a jpeg with a custom file name ie: SBP\_D750\_4254 8 x 12



To resize your image for digital submission in Elements goto Image Resize - Image Size, in the Image size dialogue box Change the largest pixel size to 1024, leaving Constrain Proportions checked and Resample Image checked.



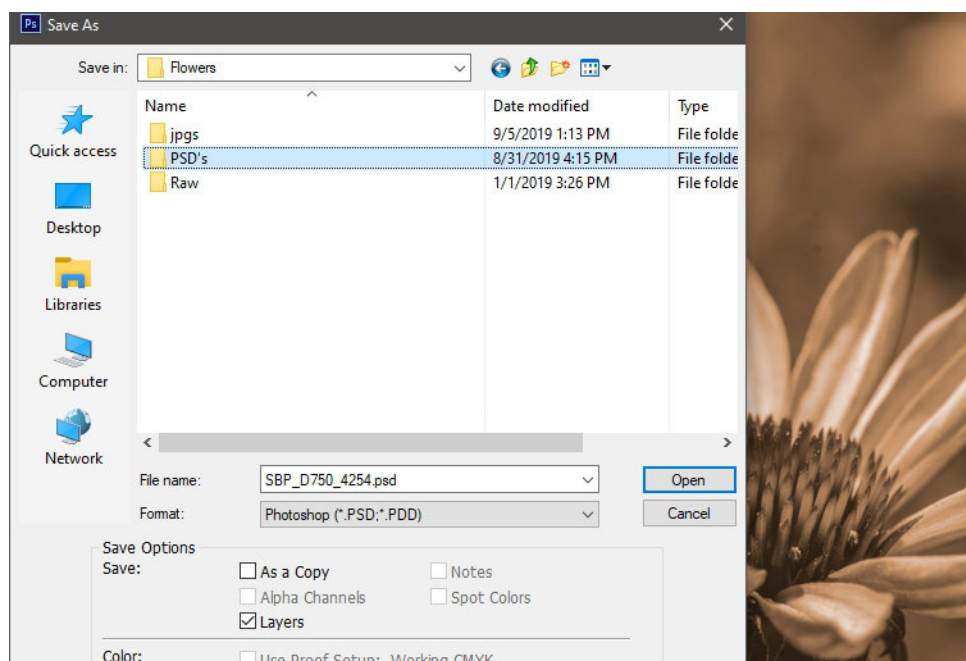
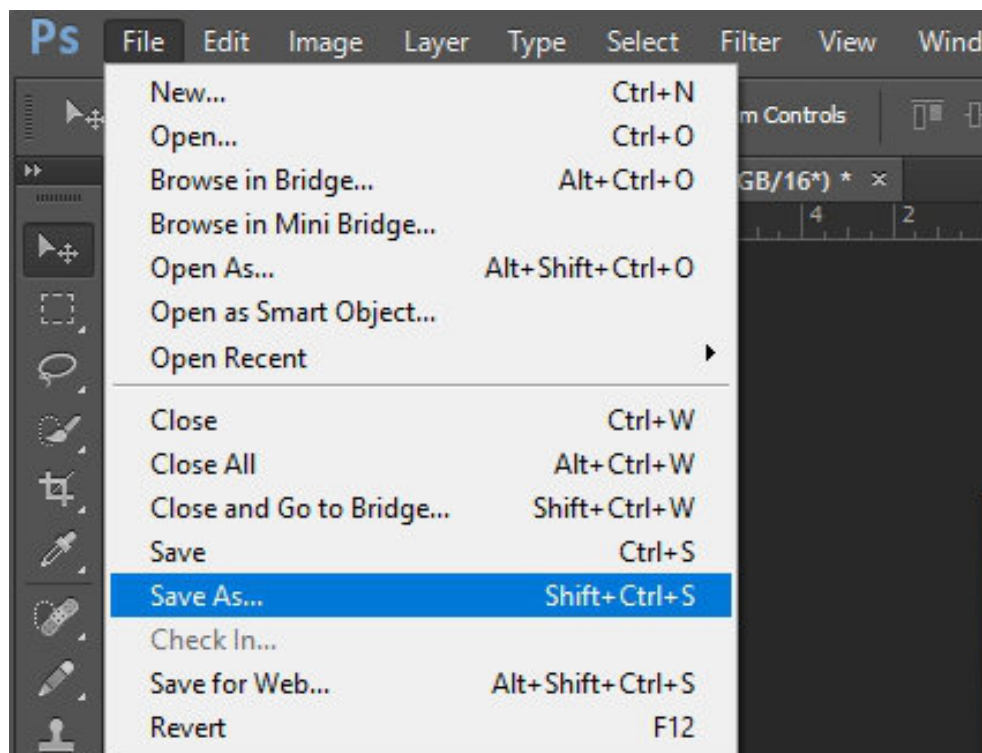
Then goto, File - Save As, From the Save as type drop down menu select jpeg, then in the File name box give your file a name your can remember later. ie: SBP\_D750\_4254\_Club.



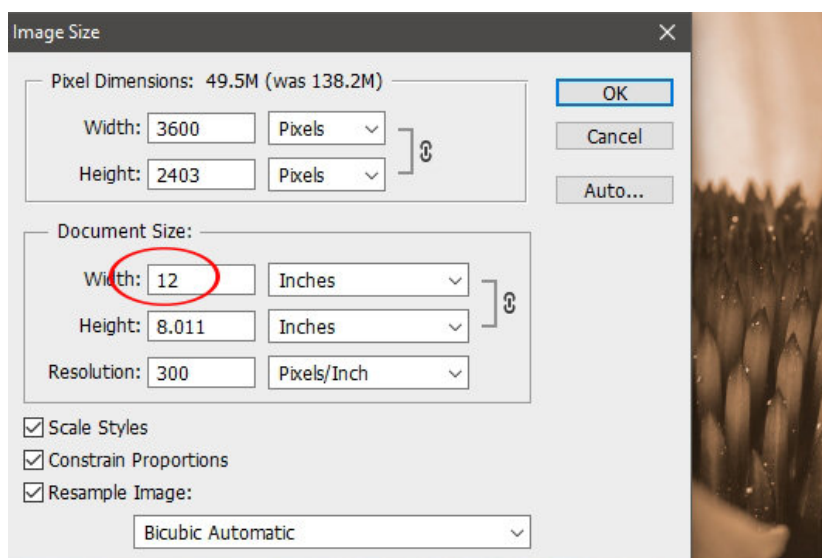
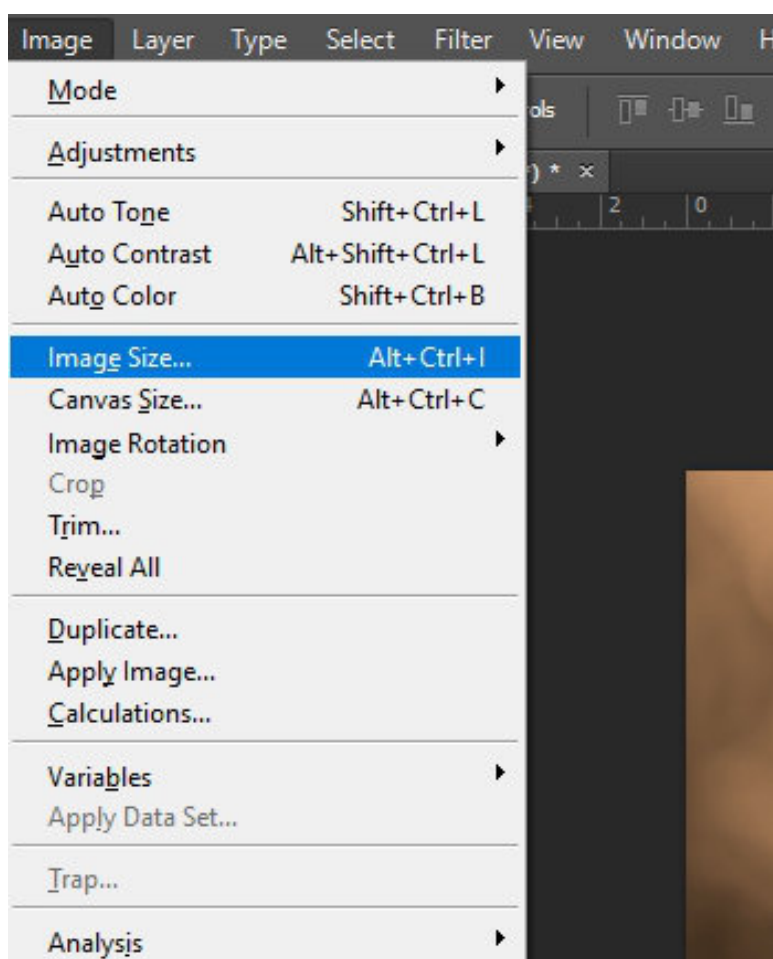
# Photoshop CS 6



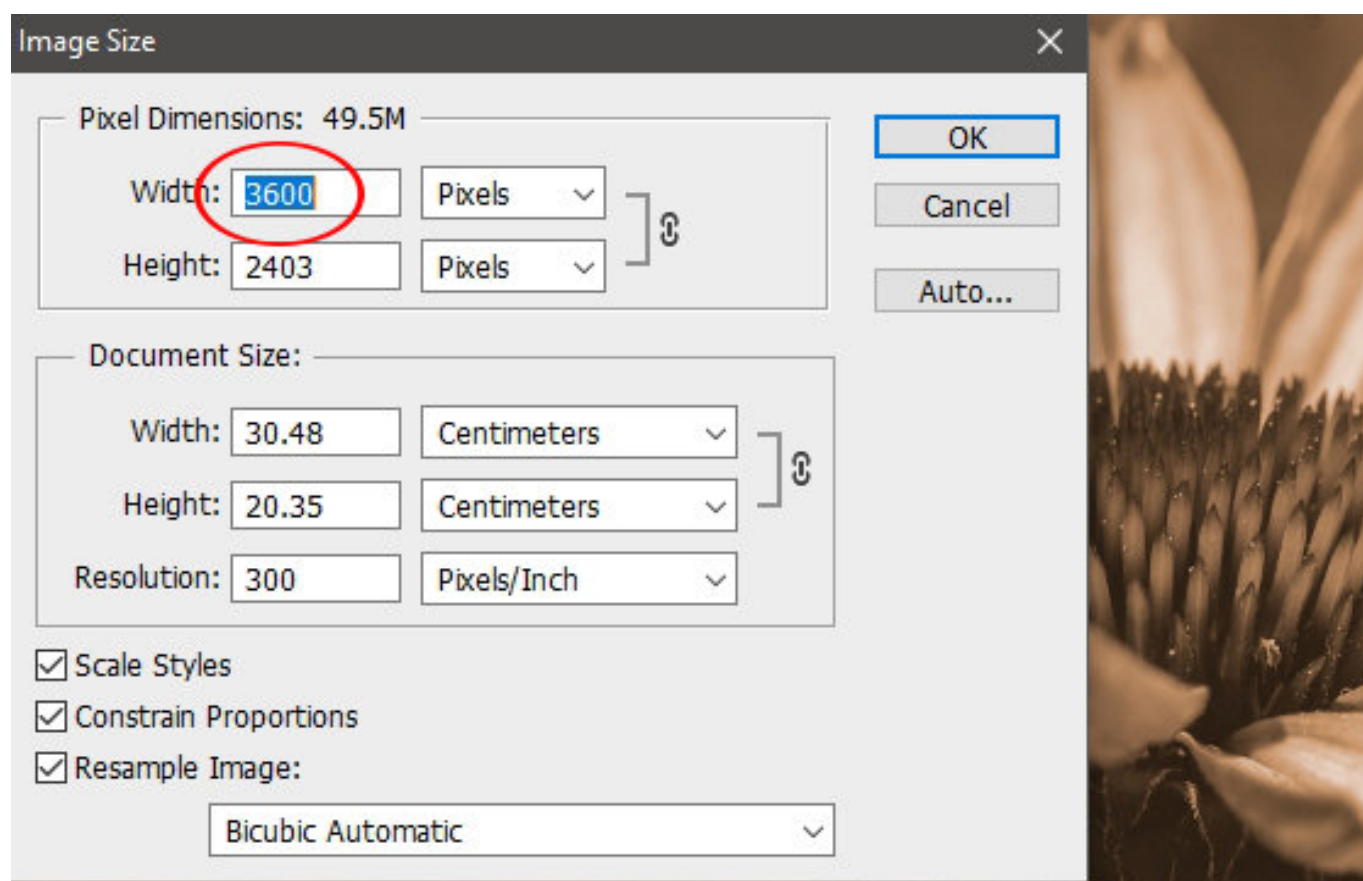
In Photoshop when you open your Raw file you will be working on a raw file. You will need to save this as a PSD by going File - Save As. The Save As dialogue box opens, you have the option to direct Photoshop to where you want to save the PSD. Photoshop will automatically select the PSD format.



In Photoshop to save your file as a file for print, goto Image - Image Size. In the image resize dialogue box, in the Document Size Box select inches from the drop down menu, Change the width dimension to 12 if making 8 x 12 print leave the Constrain Proportions checked and click OK.



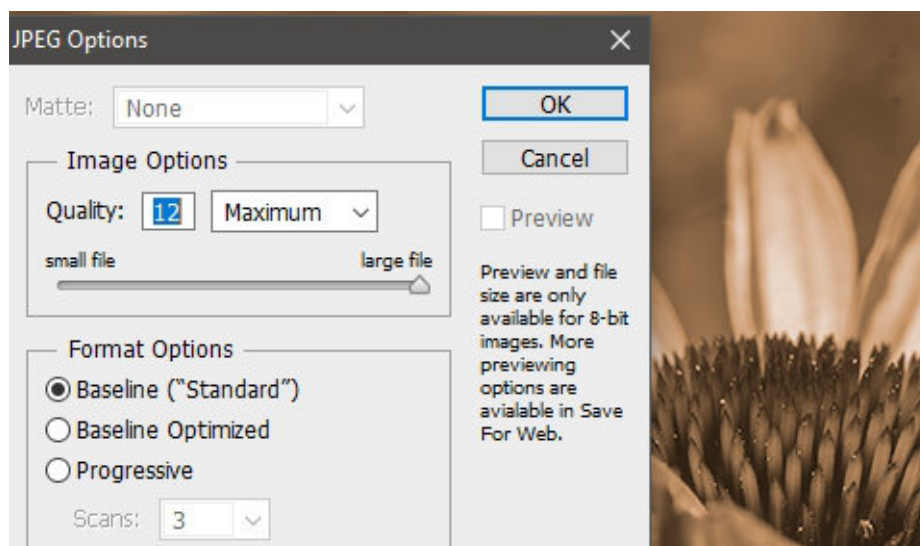
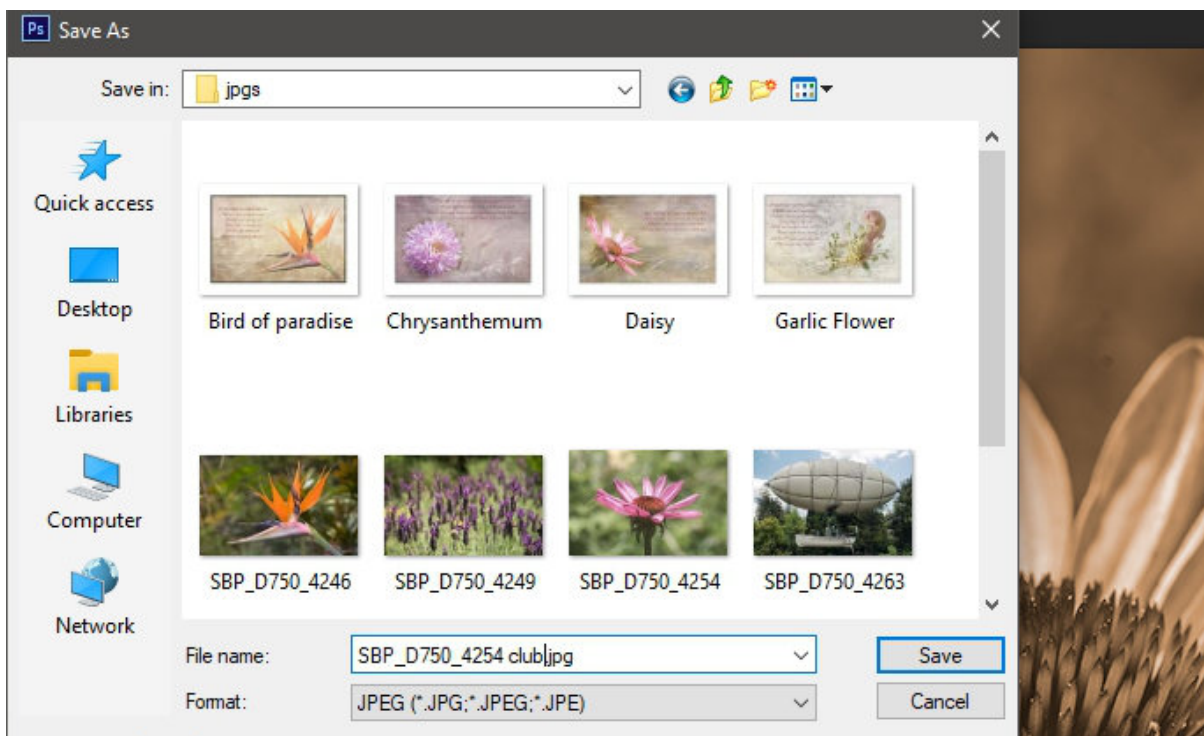
To resize your image for digital submission in Photoshop goto Image - Image Size, in the Image size dialogue box Change the largest pixel size to 1024, leaving Constrain Proportions checked and Resample Image checked. Then Click OK.





Now save your image as a jpeg. Goto File - Save As. In the Save As dialogue box, starting at the top, Save in: select from the drop down menu the location you wish to save your file. In File name: give your file a unique name ie: SBP\_D750\_4254 club. In Format: Select jpeg, when you are happy click Save.

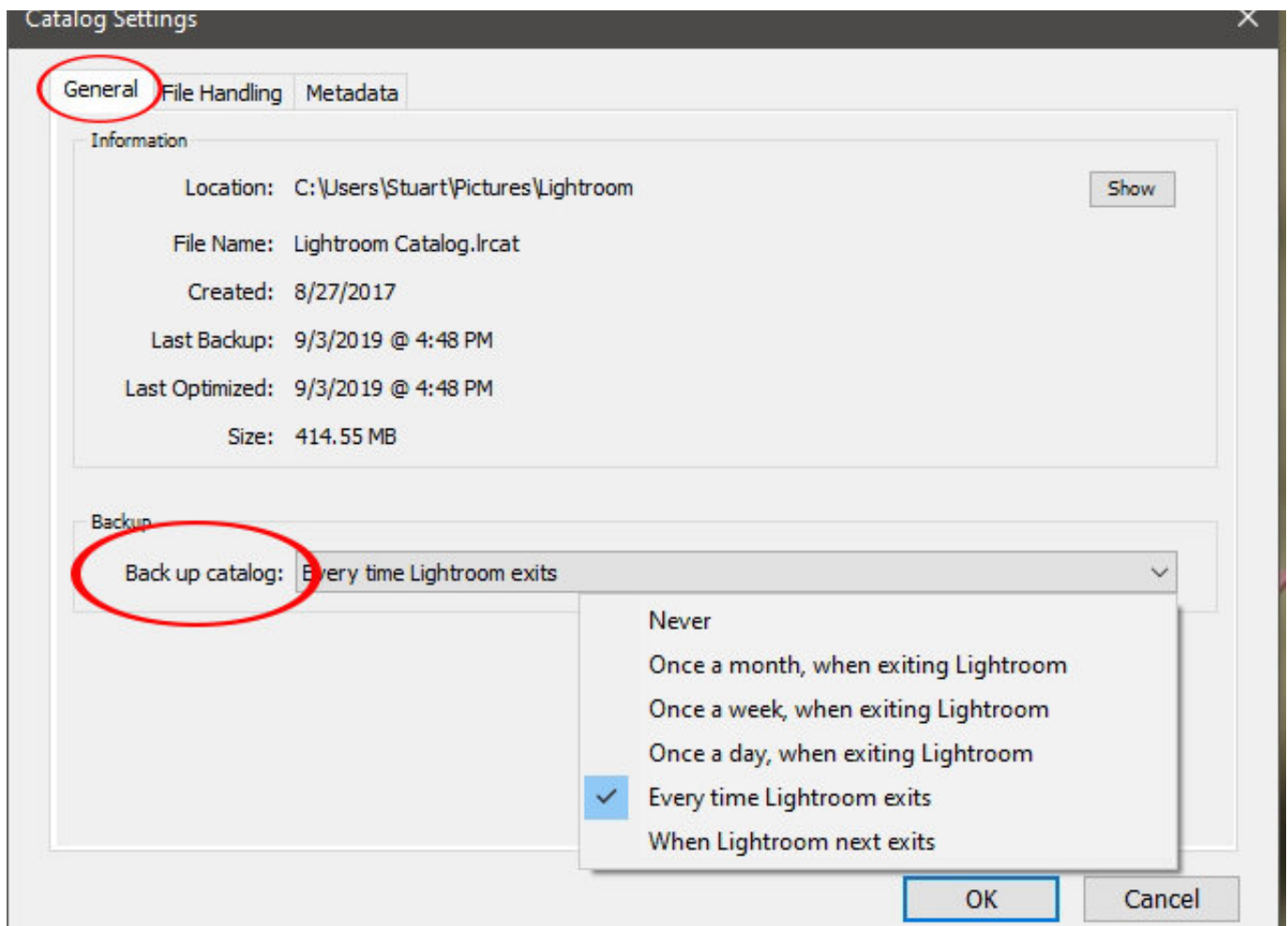
The jpeg Options box will appear move the slider to the far right so you have a quality of 12. Click OK.



# Lightroom 6



Lightroom, use a different system with regards to working with saving files. You need to setup Catalog settings so that Lightroom backs up catalog everytime Lightroom exits. Goto Edit- Catalogue Settings, under the General tab in the dialogue box backup choose Every time Lightroom exits.



To save your image for digital submission within Lightroom, in the Library Module, click on the Export button bottom left. In the Export Location box you can specify the folder you require your image to be save. Select Specific folder from drop down menu, then click on choose and navigate to the folder. In the File Naming box check Rename to: select Custom Name from drop down menu. In the Custom Text box, rename your file to the club format for submission.

**Export Location**

Export To: **Specific folder** ▾

Folder: G:\Images\Summer Project\Flowers\jpgs ▾ **Choose...**

Put in Subfolder: Untitled Export

Add to This Catalog     Add to Stack: Below Original ▾

Existing Files: Ask what to do ▾

---

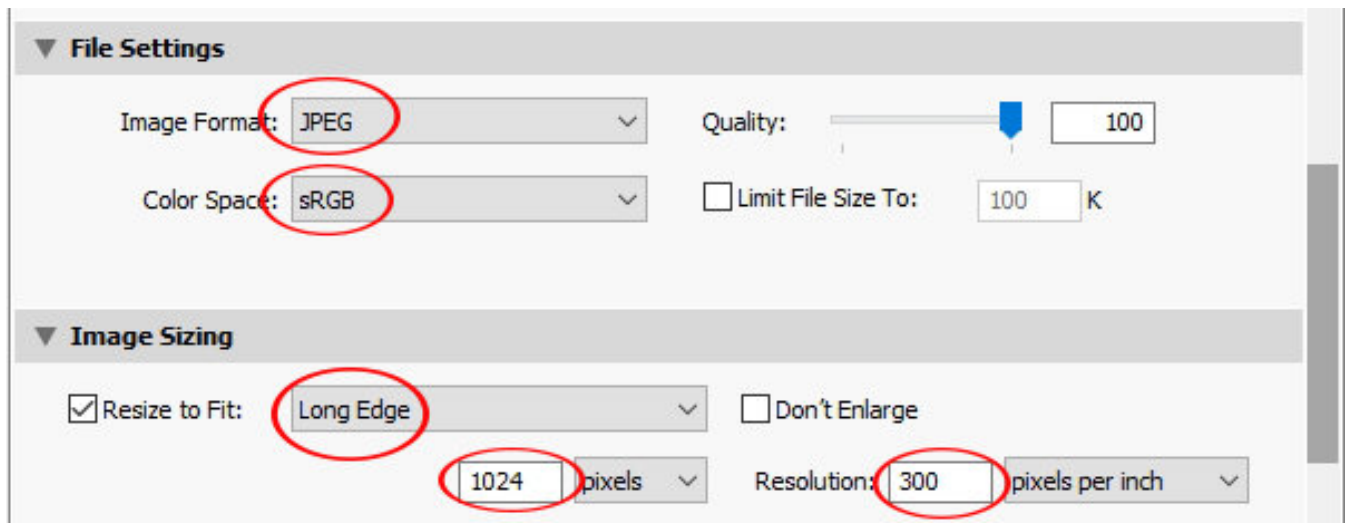
**File Naming**

**Rename To:** **Custom Name** ▾

Custom Text: **Title-Name-Club #-Set-Date**    Start Number:

Example: Title-Name-Club #-Set-Date.jpg    Extensions: Lowercase ▾

In the File Settings box, Image Format select JPEG from the drop down menu, Colour Space box select sRGB from the drop down menu. In the Image Sizing box check Resize to Fit: select Long Edge from the drop down menu, type 1024 in the Pixels Box and leave Resolution at 300 ppi. Click Export.



To export an image for printing within Lightroom, we can follow the same procedure as exporting for digital submission, in choosing where the file is saved. In the export dialogue box the File settings remain the same, in the Image Sizing box Check the resize to Fit box, select Width & Height from the drop down menu. Type 12 in the width box and 8 in the height box, if printing an 8 x 12 print. In the Output Sharpening box check sharpen For: select type of paper from drop down box and Standard in the Amount box.

**▼ File Settings**

Image Format: **JPEG** Quality:  100

Color Space: **sRGB**  Limit File Size To:  K

**▼ Image Sizing**

Resize to Fit: **Width & Height**  Don't Enlarge

W: **12.000** H: **8.000** in Resolution: **300** pixels per inch

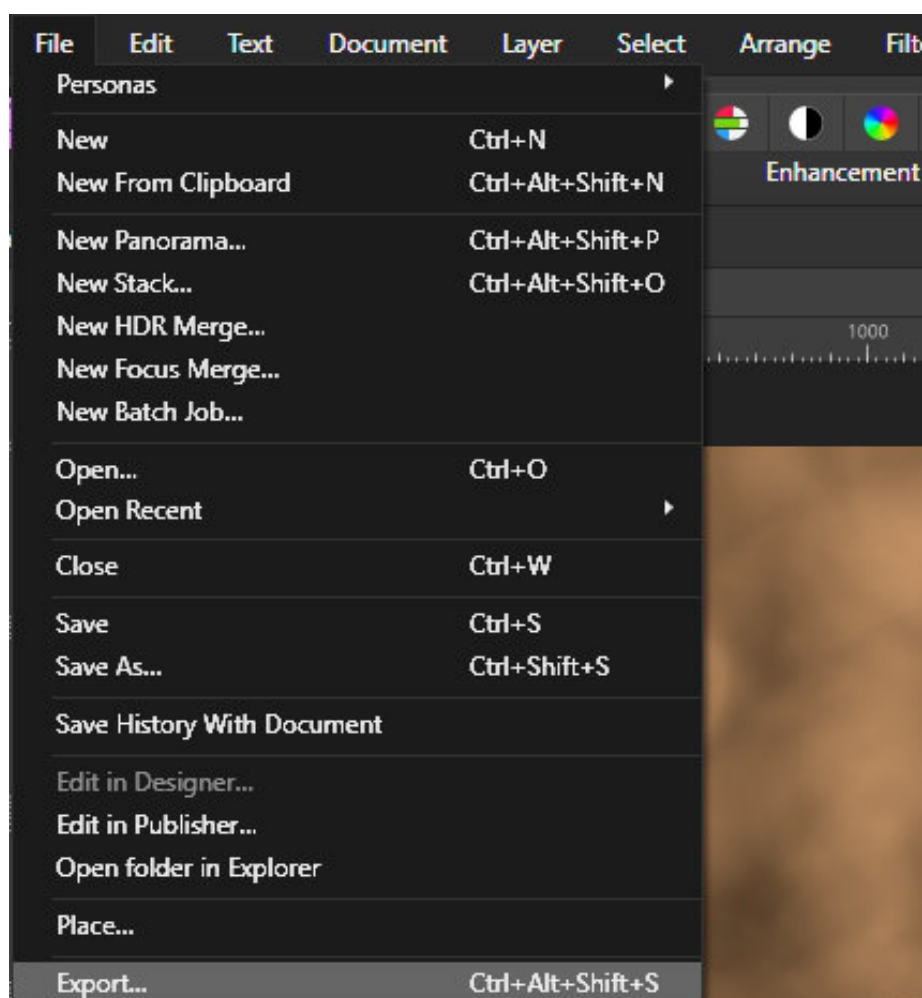
**▼ Output Sharpening**

Sharpen For: **Matte Paper** Amount: **Standard**

# Affinity Photo

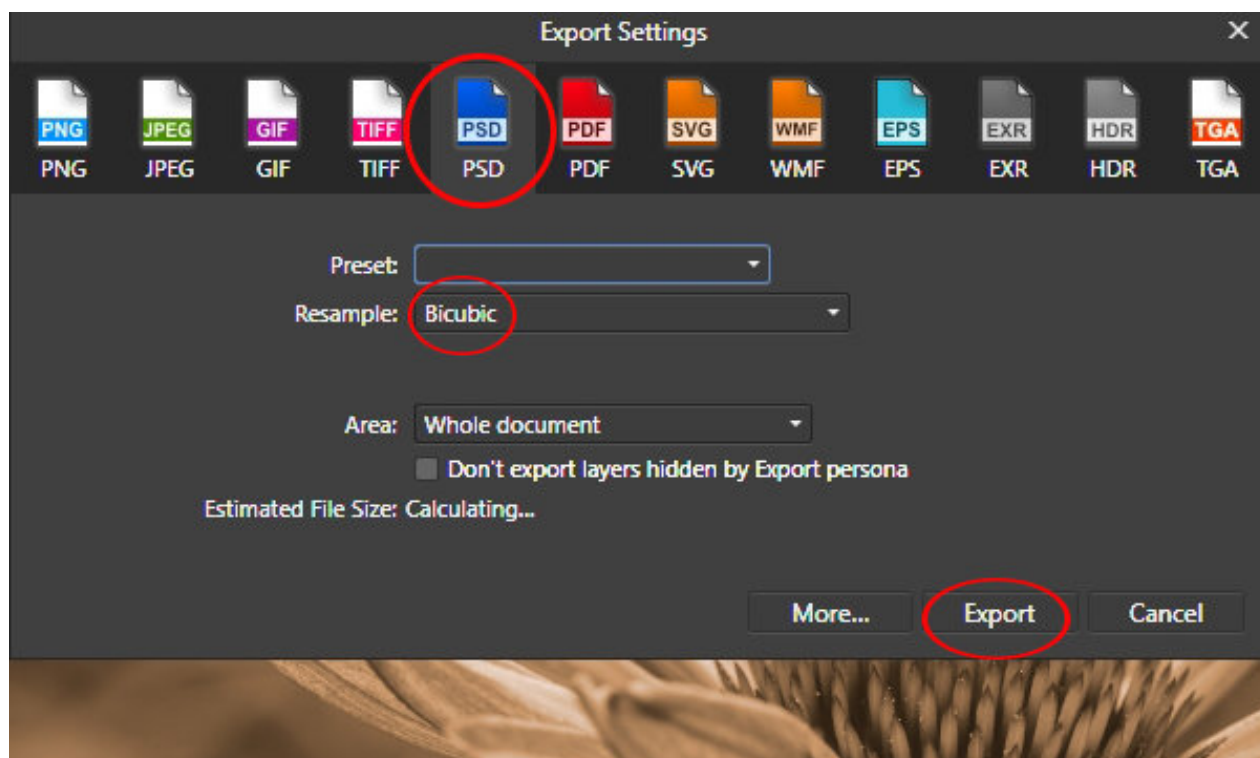


Affinity uses the Export Persona to save file to different formats rather than Save As. If you use Save As from the File drop down menu, Affinity will save your image as a Affinity file. Goto File - Export to open the Export Persona.

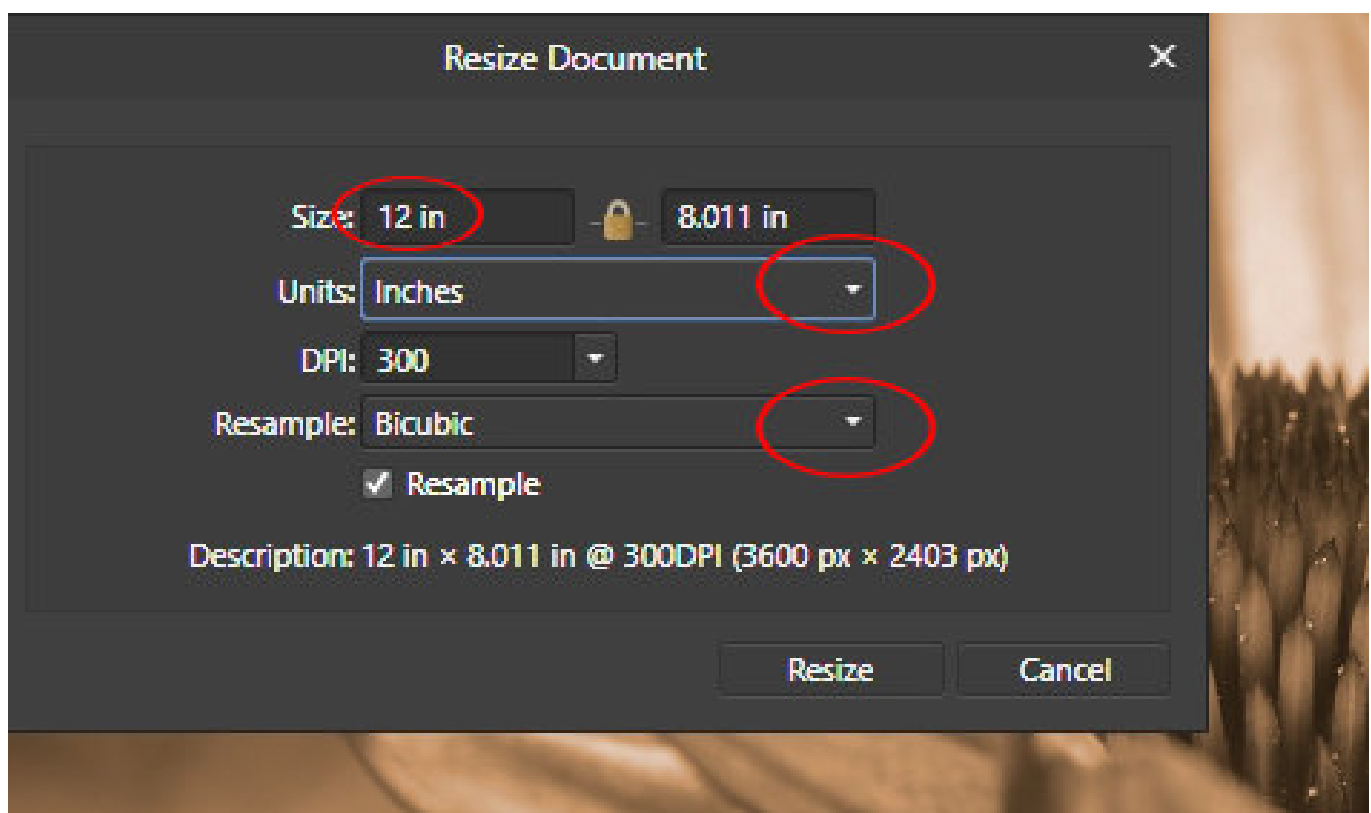




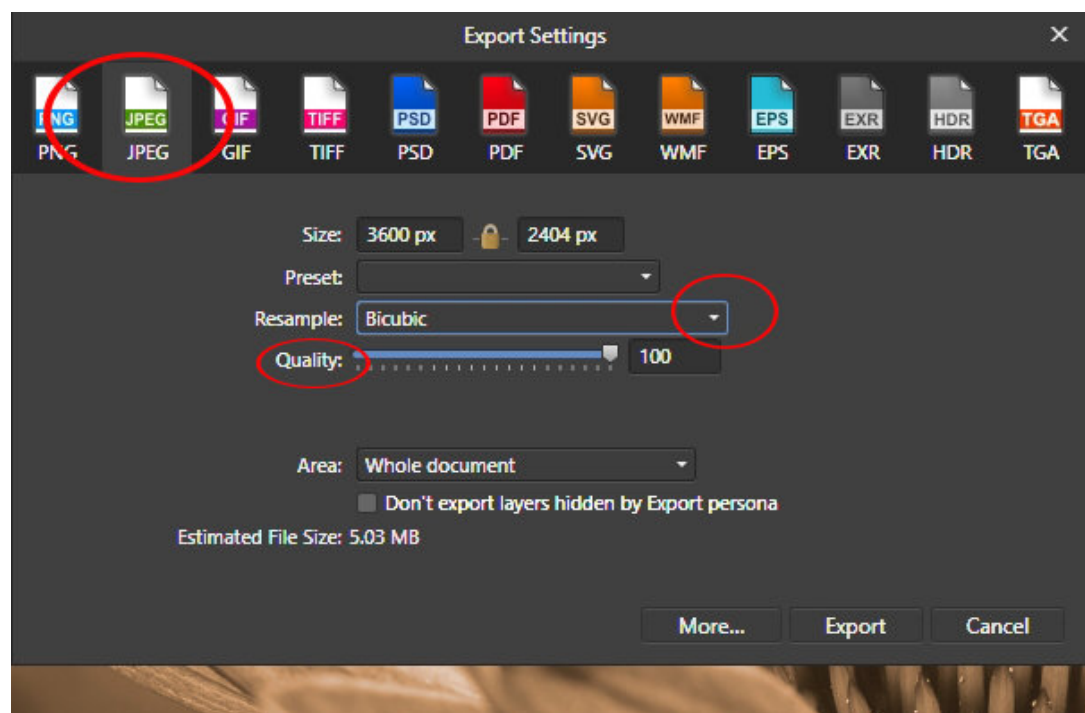
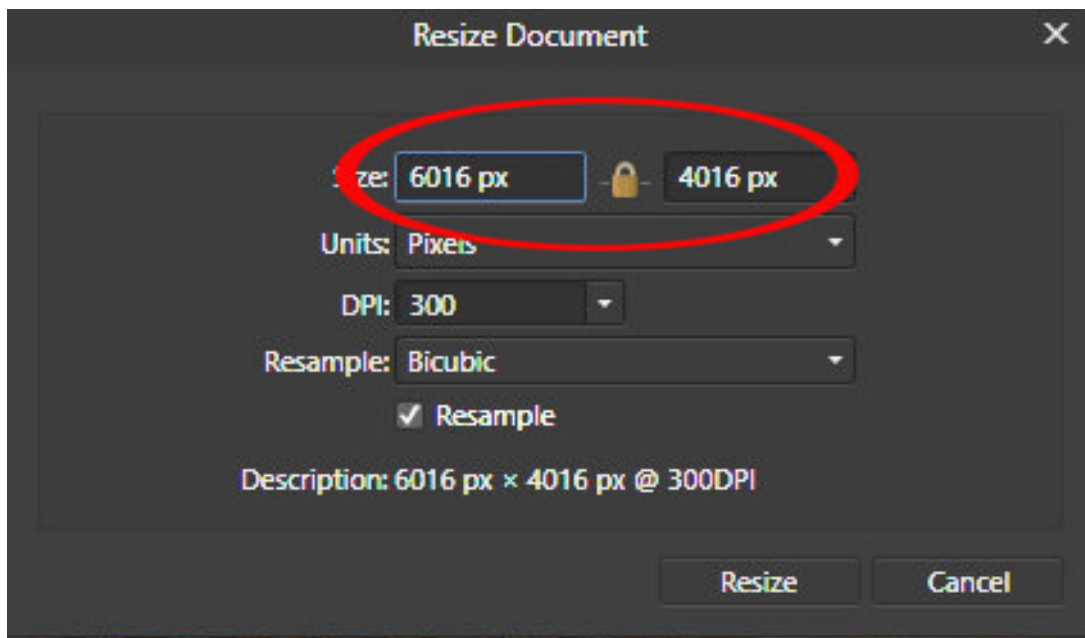
In the Export Setting Dialogue Box select PSD, from the Resample drop down menu select Bicubic, click Export. In the Area box drop down menu select Whole document. this will save your file as a PSD with all layers/working intact.



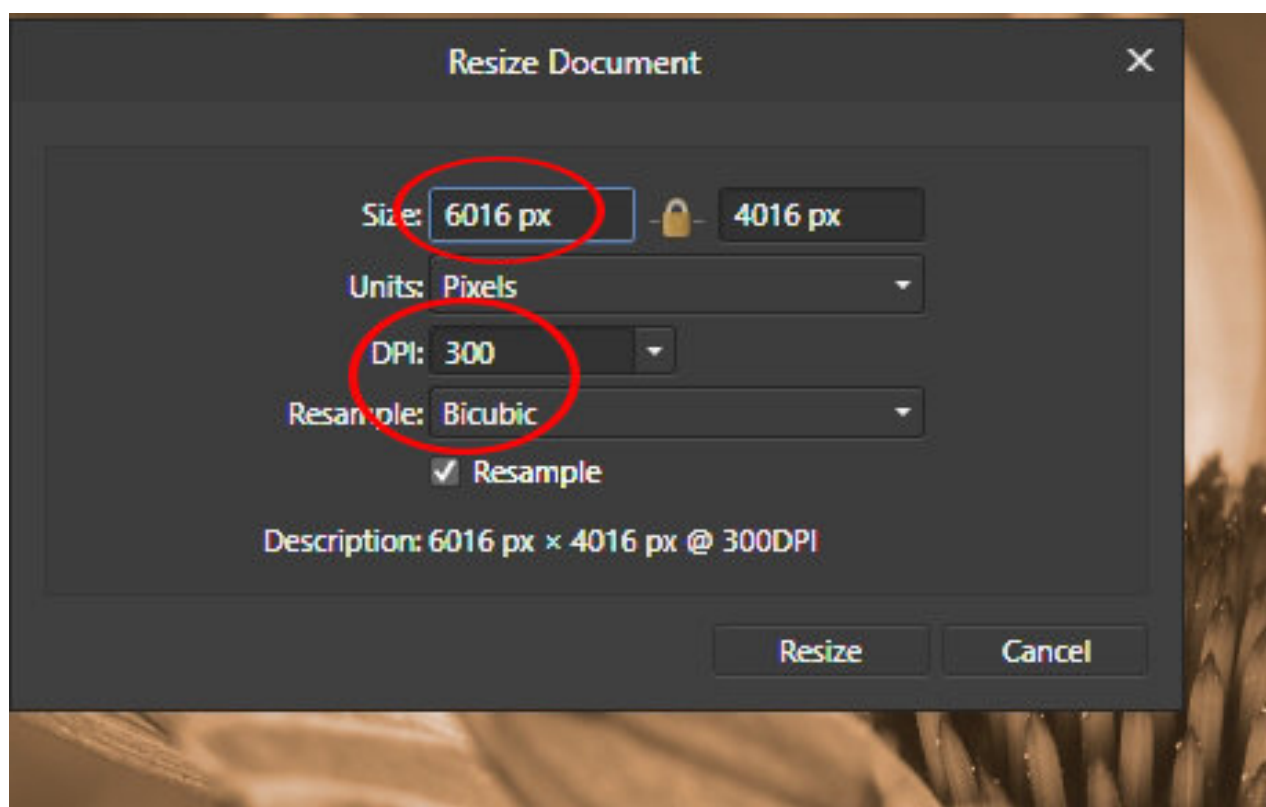
To Resize your image for print, goto Document - Resize Document. This will bring up the Resize dialogue box. In the Units box select inches from the drop down menu, select Bicubic in the Resample drop down box. If your are making a 8 x12 Print type 12 in the first Size box, the other box will change automatically.



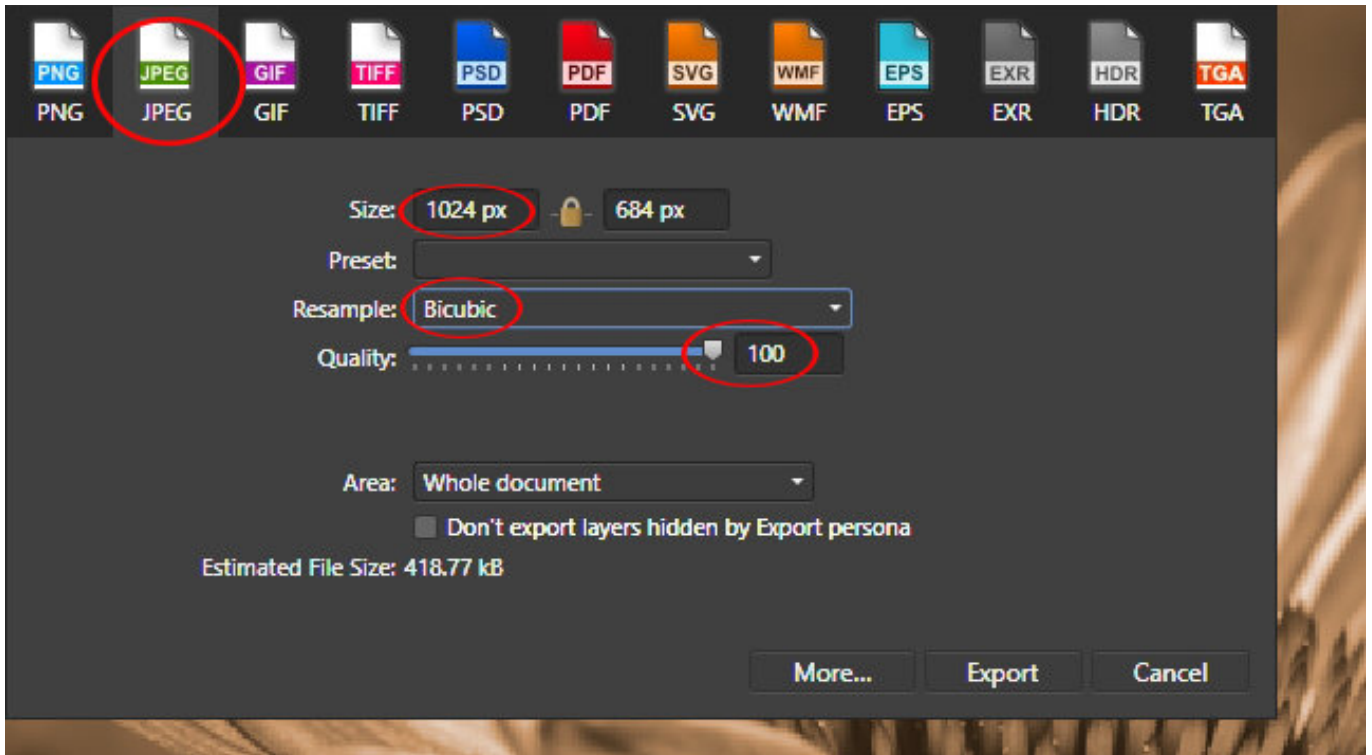
Now you have resized your image for print, goto File - Export. The Export Settings dialogue box will open as it did when you exported as a PSD. You will notice that the pixel dimensions have changed. Select JPEG, Bicubic from the Resample: drop down box, Leave the Quality at 100. Click Export You will notice that the pixel size of the image has changed when you resized to 8 x12.



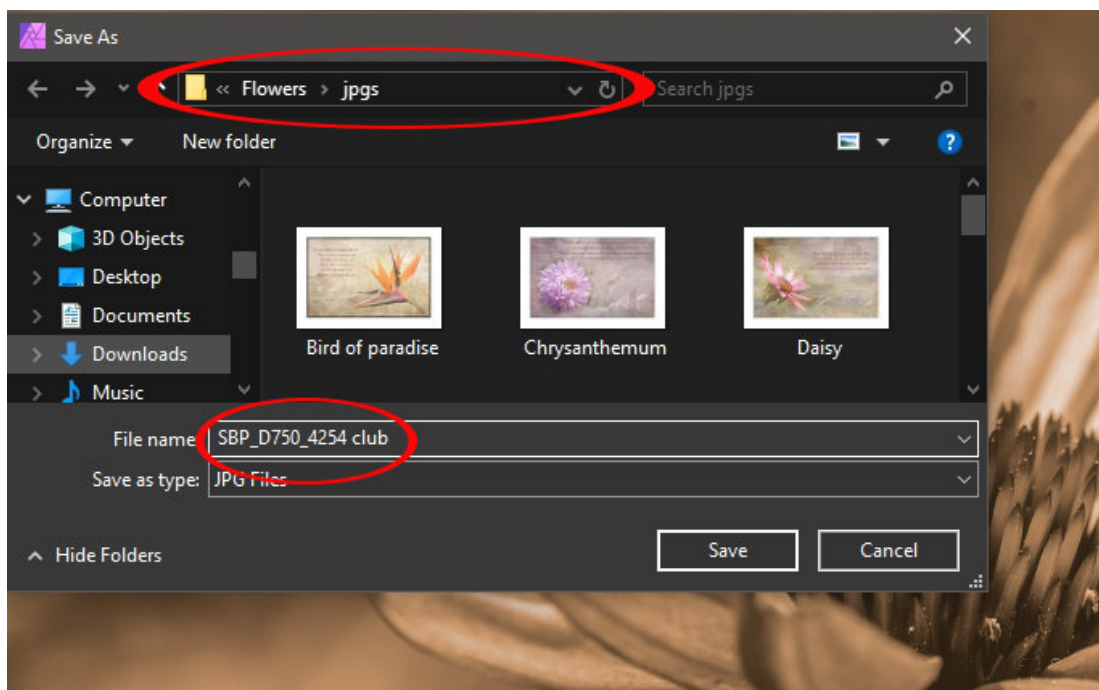
To resize your image for digital submission, goto Document - Resize Document. In the Resized Document dialogue box change the largest pixel dimension to 1024, make sure you have 300 selected in the DPI: box and Bicubic selected in the Resample box.



Now go File- Export. With the Export Settings dialogue box open, select JPEG, Make sure the largest pixel size is 1024, select Bicubic in the Resample: box and Quality set to 100. Click on Export.



When you click Export the Save As dialogue box, give your file a unique name ie: SBP\_D750\_4254 club, Up at the top in the folder box using the downward arrow to open up and navigate to folder were you would like to Save your file.



That concludes this tutorial.

I hope you have found it of some use and help in Resizing & Saving your images. I know we have talked about saving your file a number of different times with different names, external storage is cheap, I personally have maybe 3 or 4 different workings of files, ie: Colour, Black & White and Sometimes a mixture of both all saved as PSD's, and uniquely named.

And do I have too say BACKUP.